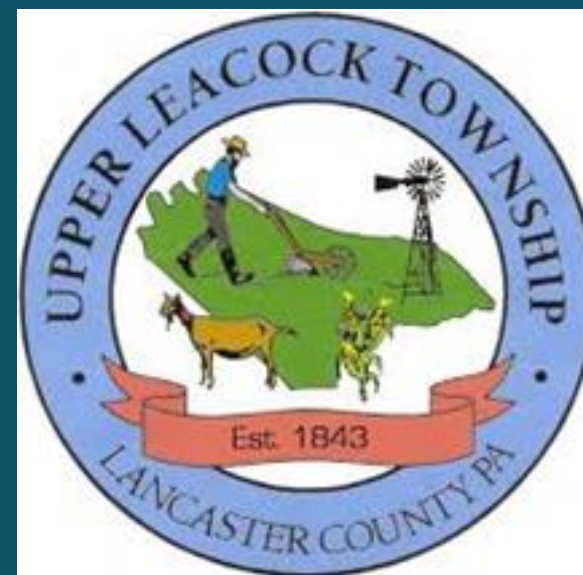


Upper Leacock Township

Stormwater Program

Single-Family Residential

March 2022



RETTEWSM

AGENDA



- ▶ What is Stormwater?
- ▶ Why implement a Stormwater Program?
- ▶ Federal & State Stormwater Regulations
- ▶ Impacts on Upper Leacock Township
- ▶ ULTMA (Authority) Roles & Responsibilities
- ▶ Stormwater Fees, Credits & Appeals
- ▶ Stormwater Billing and Collection
- ▶ Questions

What is Stormwater?

Rain, Snow, Melting Snow



REVIEW

What is Stormwater?

How is it managed now?



- ▶ Municipal Separate Storm Sewer System (MS4)
 - ▶ Inlets, Pipes, swales, detention basins
 - ▶ Collected and conveyed directly to surface streams
- ▶ Older cities and towns have combined systems
 - ▶ Stormwater discharge is treated with sewage before discharge
- ▶ Traditional goal of stormwater management – reduce flooding
- ▶ Added goals include reducing stormwater pollution for water quality

Why Implement a Stormwater Program?

Federal and State Legislation



- ▶ Pennsylvania Clean Streams Law (1937)
 - ▶ Prohibits discharge that pollutes streams (sewage and industrial waste)
- ▶ Federal Clean Water Act (1974) and Water Quality Act (1987)
 - ▶ Regulates point-source discharges (sewage and industrial)
 - ▶ Added stormwater as a pollutant in 1987
- ▶ Chesapeake Bay TMDL established 2010
 - ▶ Establishes the maximum amount of sediment, phosphorus, and nitrogen while maintaining water quality standards
- ▶ Municipal Separate Storm Sewer System (MS4) Program (2003)
 - ▶ Requires municipalities to reduce stormwater pollution from the Urbanized Area as defined by the US Census Data
 - ▶ Current MS4 Permit Cycle 2018 - 2023

Federal & State Stormwater Regulations

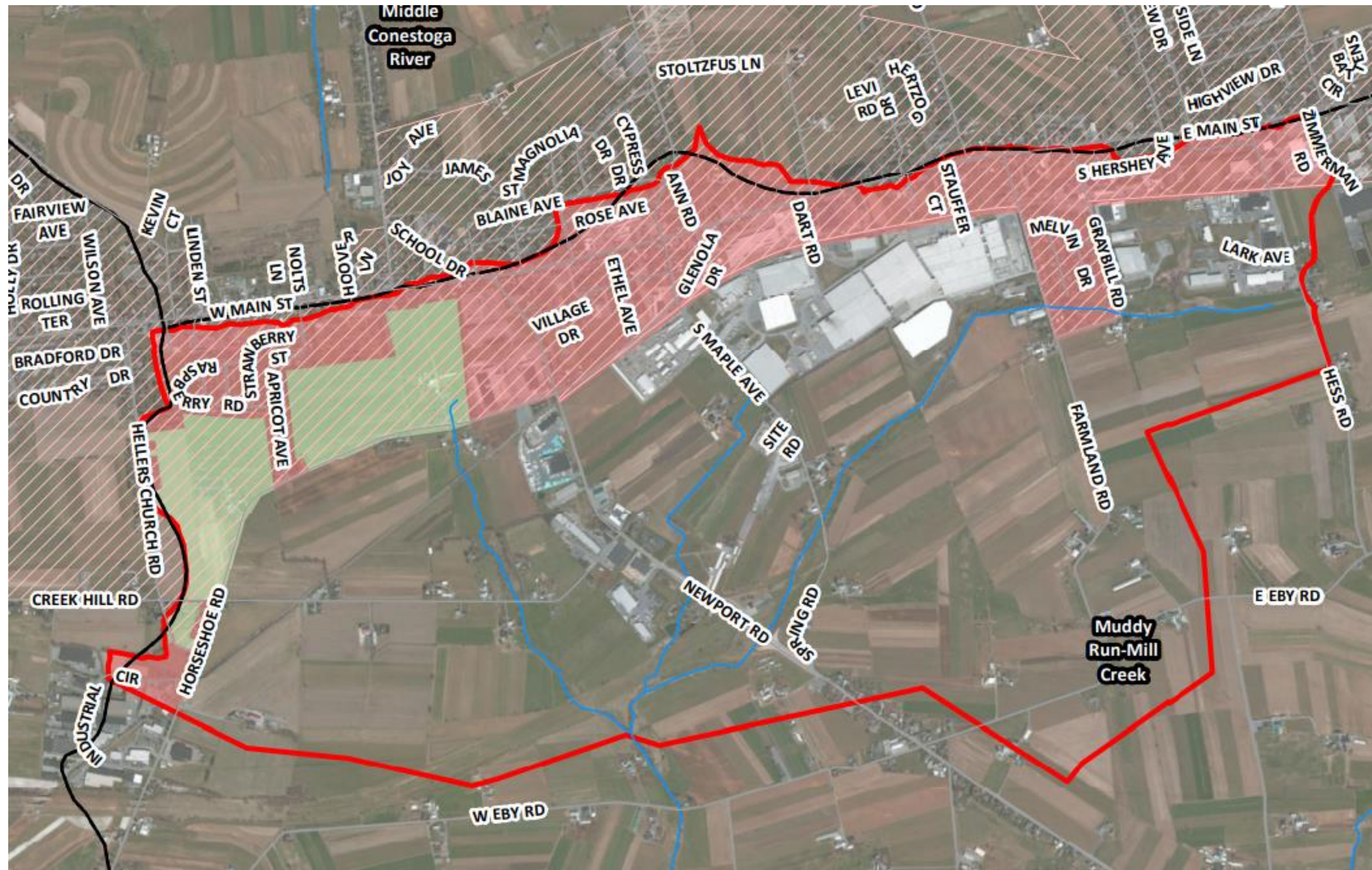
What are the MS4 Program requirements?



- ▶ Minimum Control Measures (MCMs)
 - ▶ Public Education
 - ▶ Public Participation
 - ▶ Illicit Discharge Detection and Elimination
 - ▶ Construction Site Runoff Control
 - ▶ Post-Construction Stormwater Management
 - ▶ Pollution Prevention & Good Housekeeping

Federal & State Stormwater Regulations

What are the MS4 Program requirements?



Red outline defines the watershed for UNT to Mill Creek. The red shading is developed land in the Urbanized Area and the green shading is agricultural land in the Urbanized Area.

- ▶ Pollutant Reduction Plans
 - ▶ Implement projects to reduce sediment, phosphorus and nitrogen discharged to streams.
 - ▶ Reduce sediment by 10% between 2018- 2023
- ▶ Total Maximum Daily Load (TMDL) Plan
 - ▶ Unnamed Tributary to Mill Creek
 - ▶ Reduce pollutants to improve stream water quality.

Impacts on Upper Leacock Township

Unfunded Mandate



- ▶ 2003-Present: General Fund pays for stormwater costs:
 - ▶ MCMs / Annual Reports
 - ▶ Pollutant Reduction and TMDL Plans
- ▶ 2018 Permit Cycle requires much larger MS4 costs:
 - ▶ Improve water quality
 - ▶ Stream restoration projects to meet PRP/TMDL Plans – Likely every 5 years
- ▶ Other costs:
 - ▶ Aging stormwater infrastructure
 - ▶ Flooding concerns

Impacts on Upper Leacock Township

Township General Fund



- ▶ Township doesn't want to reduce other services:
 - ▶ Maintaining roads and bridges
 - ▶ Providing public safety (Police, Fire, Ambulance)
 - ▶ Providing recreation
 - ▶ Controlling land development and growth
 - ▶ Enforcing ordinances
- ▶ Stormwater management should be paid for equally by all Township landowners

Upper Leacock Township Municipal Authority

ULTMA



- ▶ Stormwater Management Program will be delegated to Upper Leacock Township Municipal Authority (ULTMA)
- ▶ ULTMA was formerly Leola Sewer Authority
- ▶ Has owned and operated sewer and water systems since 1980's
- ▶ Name was changed in 2020

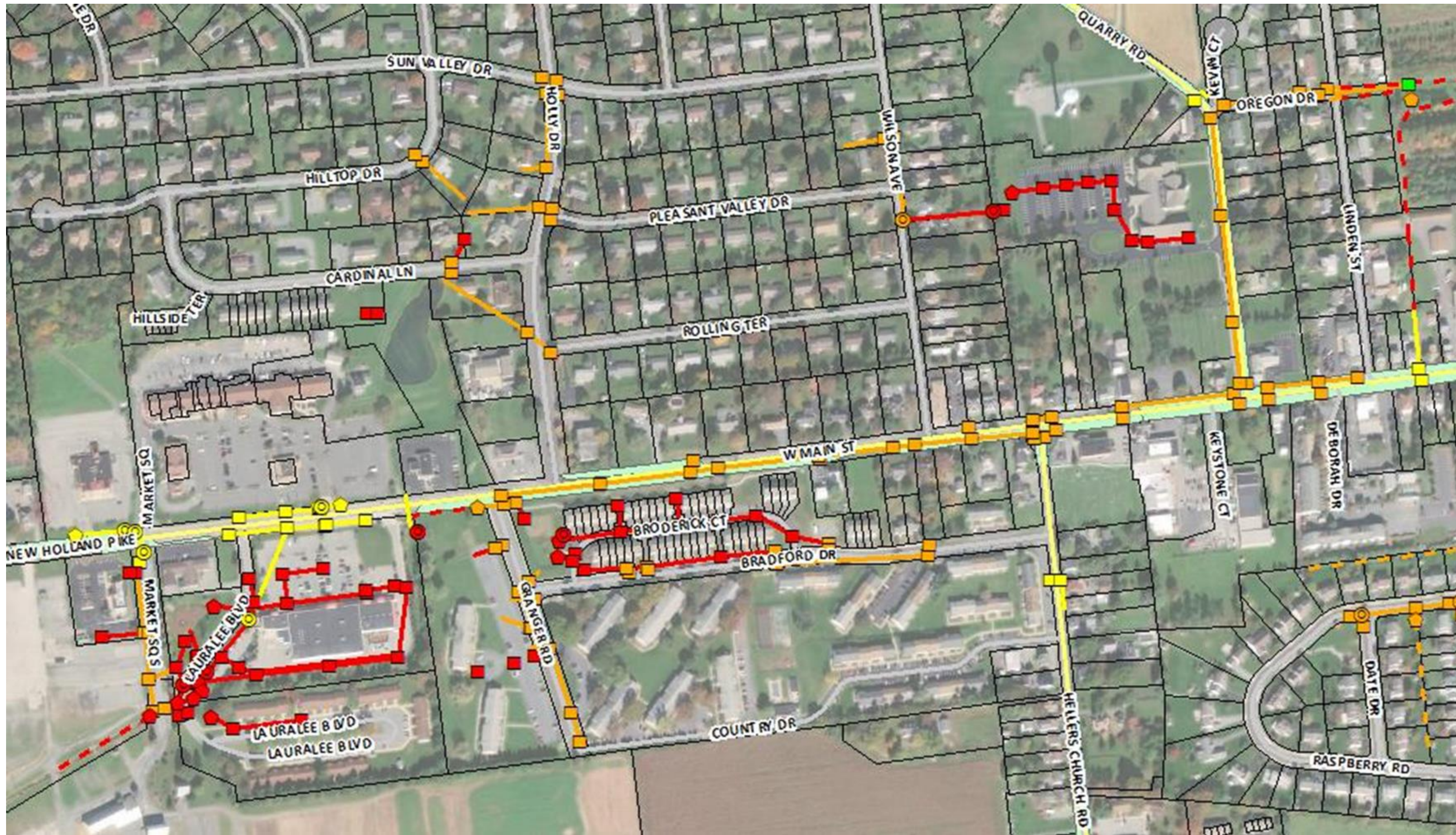
ULTMA

Stormwater Responsibilities



- ▶ Operate & maintain stormwater structures (inlets, pipes, endwalls and headwalls, manholes, etc.)
 - ▶ In Township rights-of-way
 - ▶ In private easements adjacent to Township rights-of-way where failure of the structures could cause roadway flooding
 - ▶ Stormwater facilities within PennDOT rights-of-way & privately-owned facilities will remain the responsibility of PennDOT and the property owners.
- ▶ Repair and replace deteriorating public facilities
- ▶ Administer MS4 Stormwater Program
- ▶ Construct Pollutant Reduction & TMDL Plan projects
- ▶ Prioritize & fund these activities & projects

Stormwater Facility Ownership



Orange = Upper Leacock

Red = Private

Yellow = PennDOT

Upper Leacock Twp uses ArcGIS for stormwater system mapping

Funding Stormwater

5-Year Capital Improvements Plan (CIP) *



Preliminary List of Potential Projects

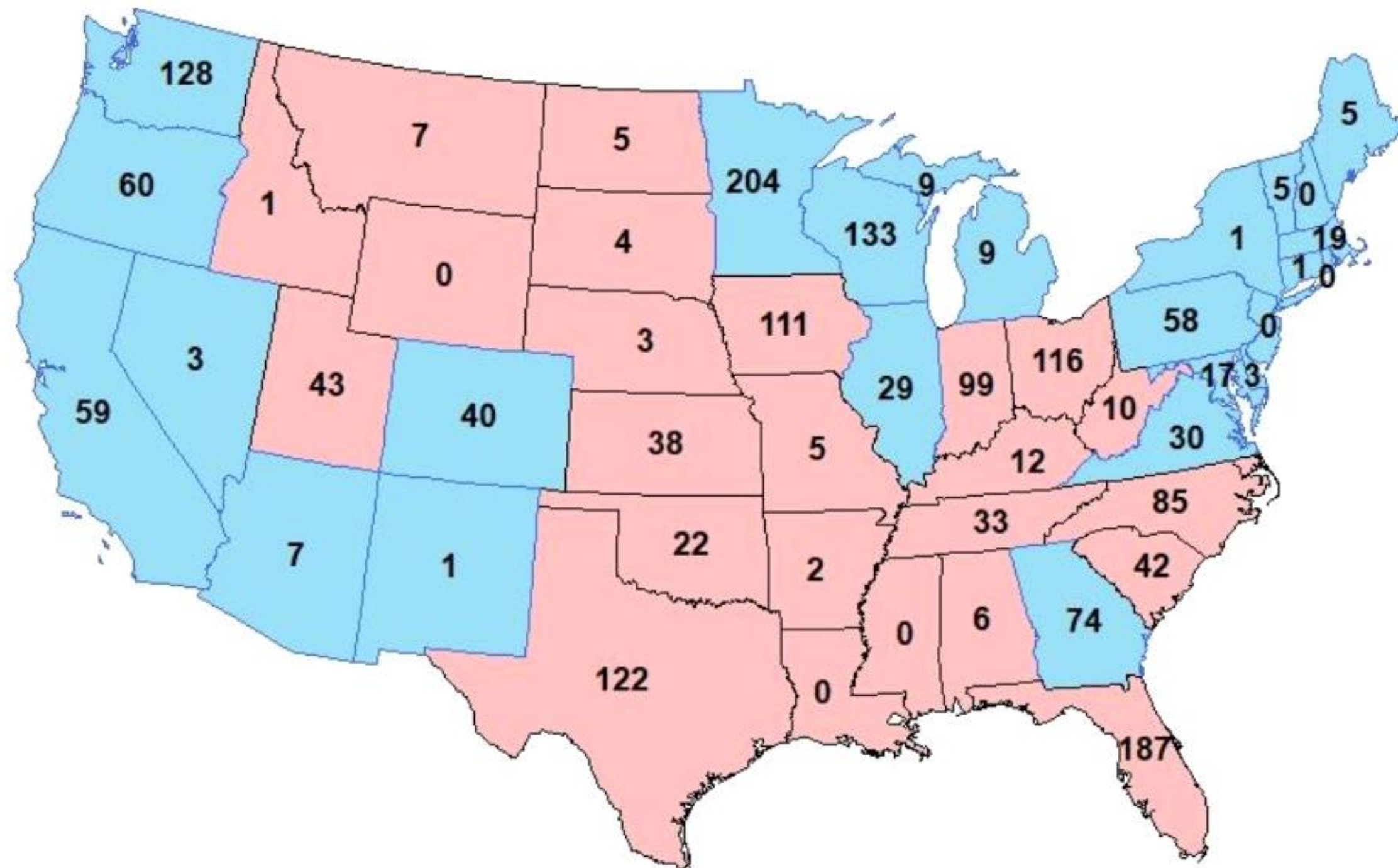
- ▶ Stream Restoration Project to achieve required MS4 reductions
- ▶ Televising the stormwater system to identify problems
- ▶ Inspect, repair and maintain the stormwater system
- ▶ Replace deteriorated pipes

*** To be prioritized/finalized by ULTMA in 2022**

Funding Stormwater

How does Upper Leacock Pay for This?

Stormwater Utilities by State and 2020 Election



► Stormwater Fees

- 1,851 Stormwater Authorities (Utilities) in Nation
- Enabling legislation in PA passed in 2013
 - 58 municipalities in PA have adopted a fee
- Stormwater Fees are charged to all users- no tax-exempt parcels
 - Schools, churches, hospitals pay fees
- All landowners paying fees means lower costs for everyone
- Stormwater fees typically range from \$4 to \$10/ERU/Month

Establishing a Stormwater Fee

Impervious Area

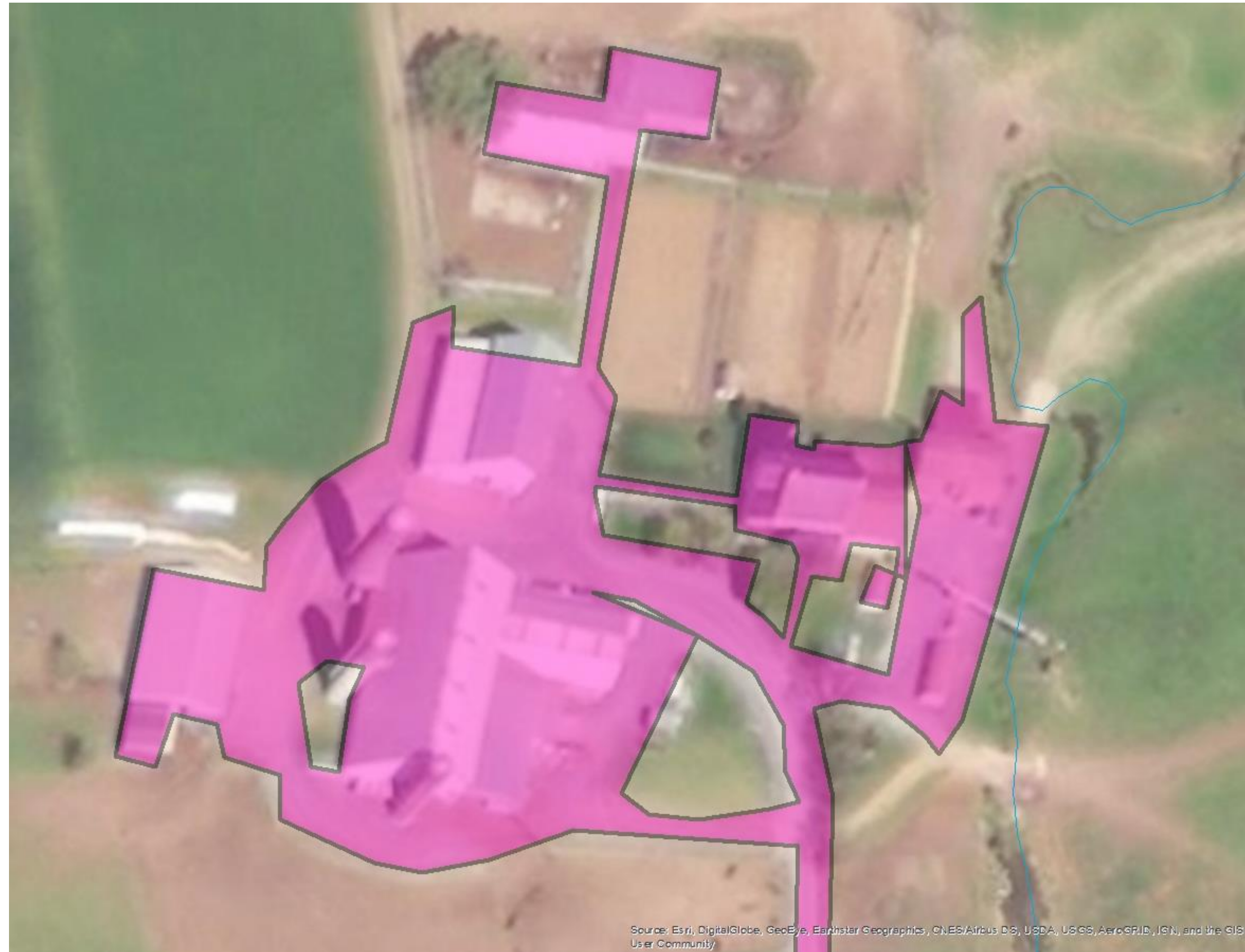


Impervious area identified in pink

- ▶ Stormwater runoff from roofs, driveways & parking lots causes problems downstream:
 - ▶ Stream bank erosion
 - ▶ Increase in sediment and nutrient pollutants
- ▶ The larger the impervious area on a property - the larger the impact on stream quality
- ▶ Therefore... the total impervious area on a property will be directly related to the stormwater fee

Establishing a Stormwater Fee

Determining SW Fee in Upper Leacock Township

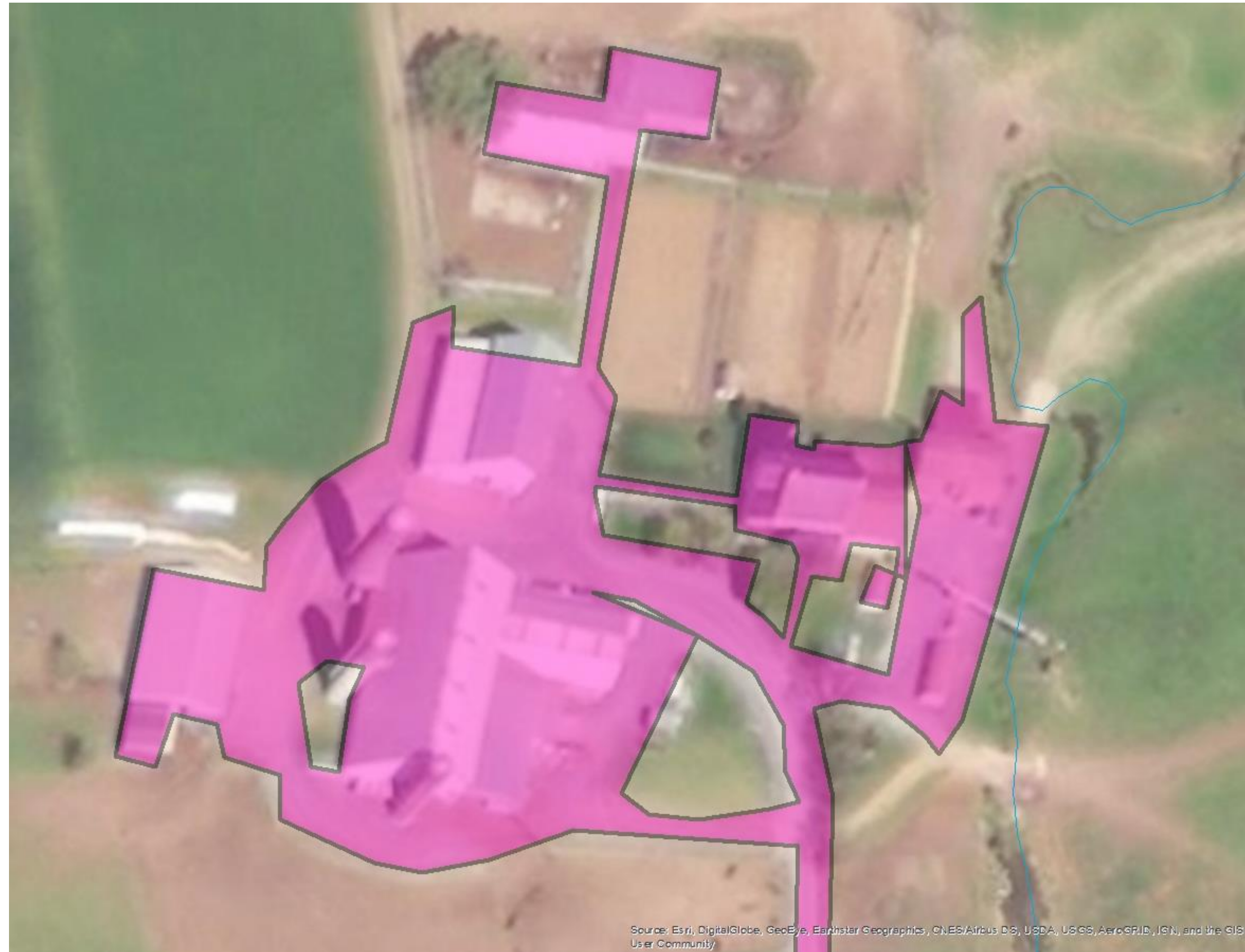


Impervious area identified in pink

- ▶ 1,960 Single Family (SF) Parcels
 - ▶ Average Impervious area of SF parcels = 4,800 square feet
 - ▶ 1 ERU = 4,800 square feet
- ▶ 682 Non-Single Family (NSF) Parcels
 - ▶ # of ERUs based on impervious area on each property
 - ▶ Example: 48,000 square feet of impervious = 10 ERUs
- ▶ 9,288 Total ERUs -Establish Fee based on SWMP costs
- ▶ ULTMA has calculated a stormwater fee of \$6.00/ERU/month

Establishing a Stormwater Fee

Calculating Your Stormwater Fee

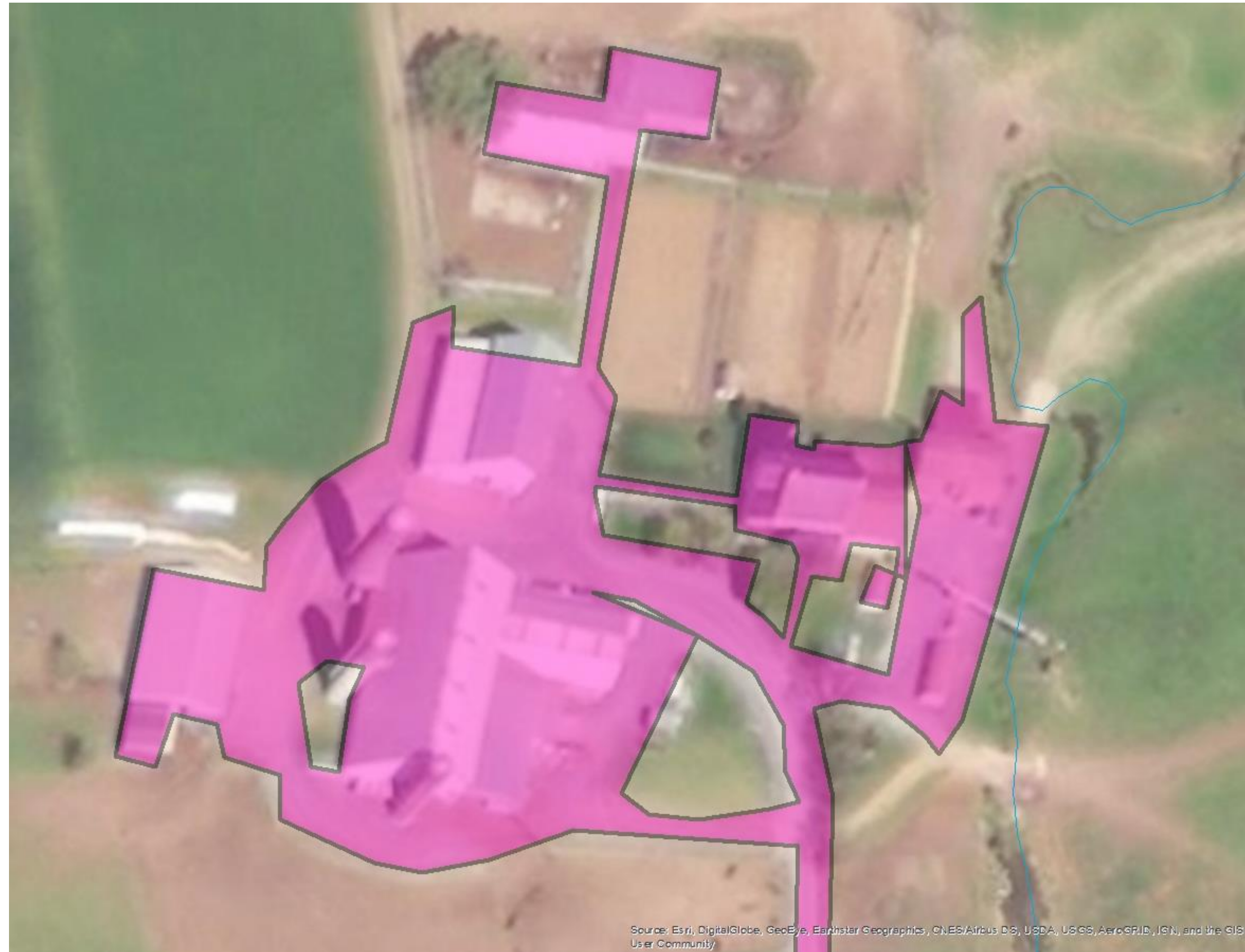


Impervious area identified in pink

- ▶ Single Family (SF) Parcels
 - ▶ 1 ERU = 4,800 sq ft = \$6 /month = \$72/year
 - ▶ Fixed Fee – will not increase if impervious area added
- ▶ Non-Single Family (NSF) Parcels
 - ▶ Total Impervious Area / 4,800 sq ft = # of ERUs
 - ▶ # of ERUs x \$6/month = SW Fee
- ▶ NSF Example:
 - ▶ Industrial parcel has 4.4 acres of impervious
 - ▶ 4.4 acres = 191,664 sq ft
 - ▶ 191,664 sq ft / 4,800 sq ft (1 ERU) = 39.9 ERUs
 - ▶ 39.9 ERUs x \$6/month = \$239.40/month = \$2,872.80/year

Establishing a Stormwater Fee

Tax Exempt Parcels



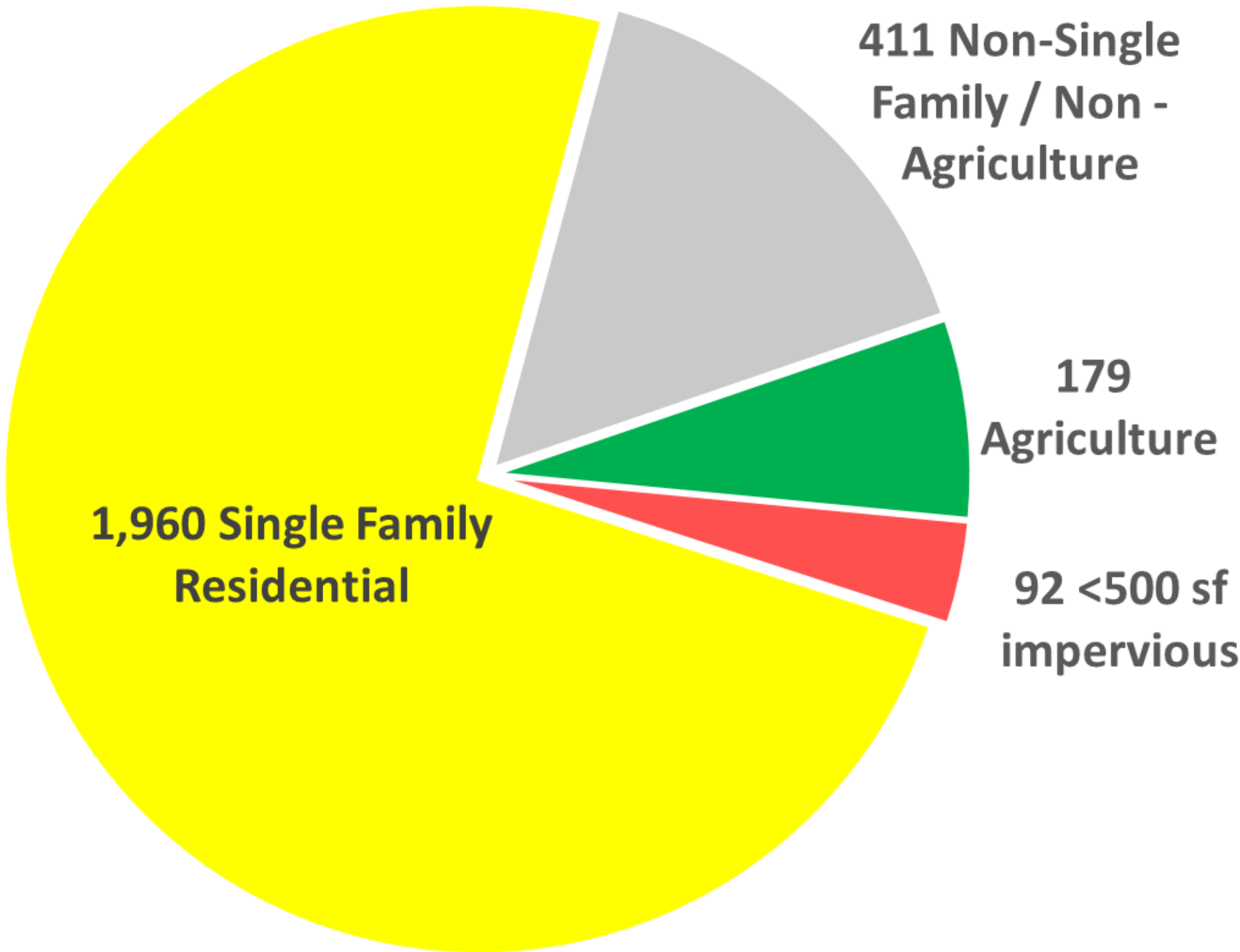
Impervious area identified in pink

- ▶ All properties with impervious area contribute to stormwater runoff, so all properties should contribute to management.
- ▶ 65 Tax-exempt parcels
 - ▶ 55 Acres Impervious Area
 - ▶ 499 ERUs = \$35,937/year
- ▶ If tax-exempt properties did not contribute, these costs would be transferred to other landowners
- ▶ More equitable for all landowners to include tax-exempt parcels in the stormwater fee since the impervious area on these properties contributes to stormwater runoff.

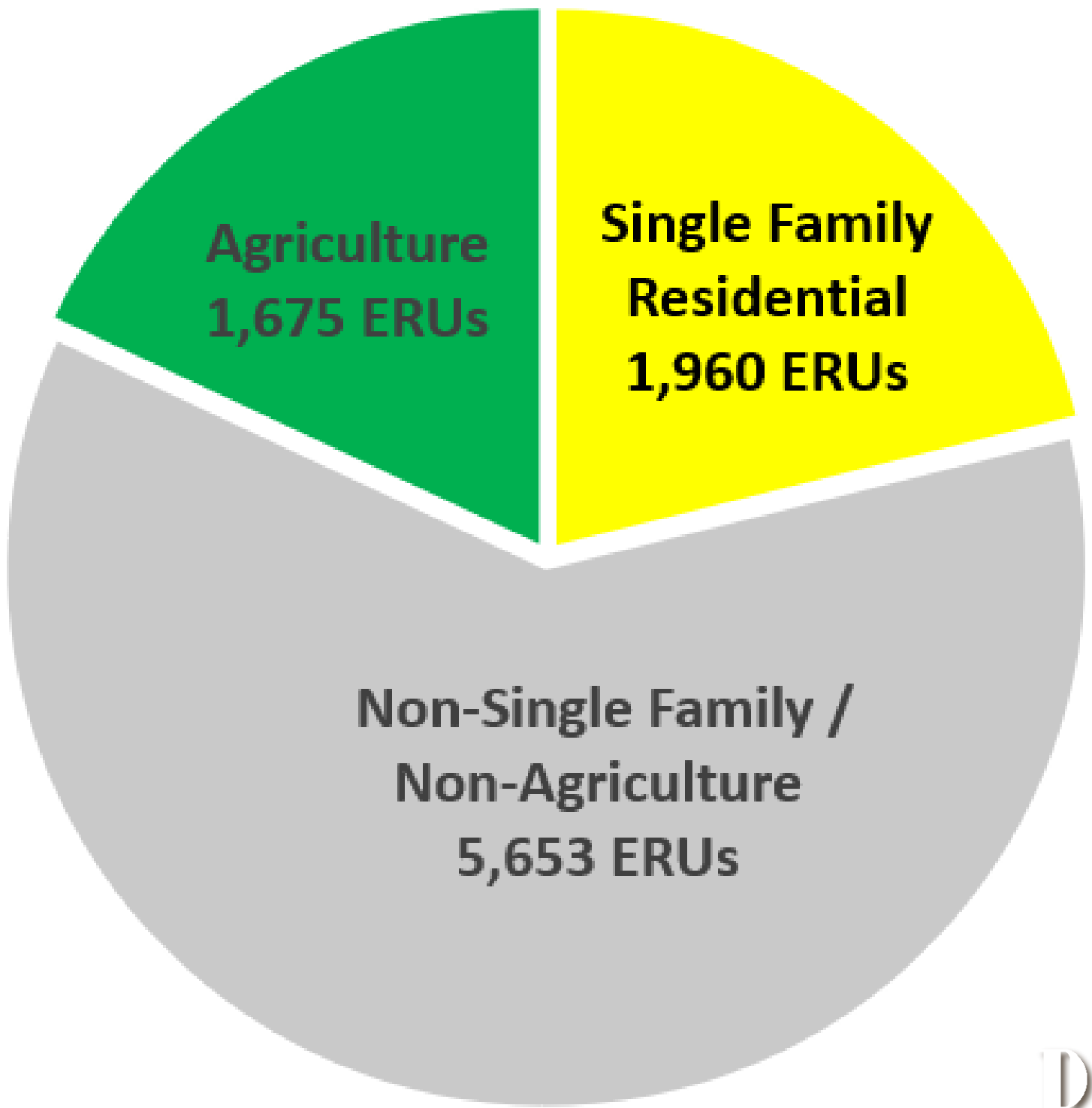
Establishing a Stormwater Fee

Upper Leacock Twp – Number of Parcels (Flat Fee) vs. Number of ERUs (ERU Fee)

Total Parcel Count by Category



Total ERUs by Parcel Category



Stormwater Credits - Single Family Residential

No credits offered for Single-Family Residential Parcels



- ▶ Pay a fee of \$6/month (1 ERU), to be billed annually (\$72/year)
- ▶ All Single-Family Residential property owners will pay one (1) ERU regardless of the actual amount of impervious area on the property.
- ▶ Streamlines administrative burden for the Authority
- ▶ If you receive a bill for a property which you don't own, please call the Township office at 717-656-9755.

Stormwater Fee – Billing and Collection

Administration of Stormwater Fee



- ▶ A separate stormwater bill will be mailed to all property owners
- ▶ Bills will be mailed annually starting in January 2023.
- ▶ Submit Credit / Appeal applications as soon as possible to receive credits for 2023

Contact Information

Single Family Residential

- ▶ General Questions:
 - ▶ Upper Leacock Township: 717-656-9755

THANK YOU!

BETTER